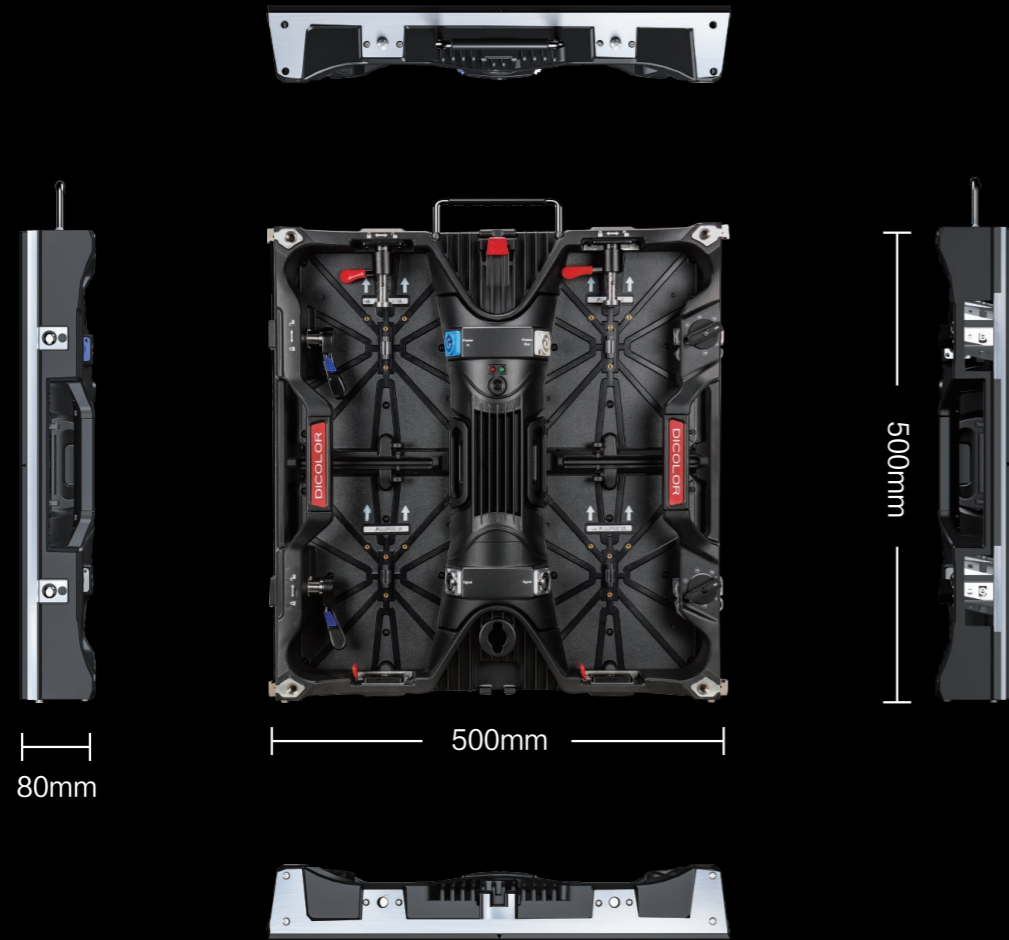


Appearance

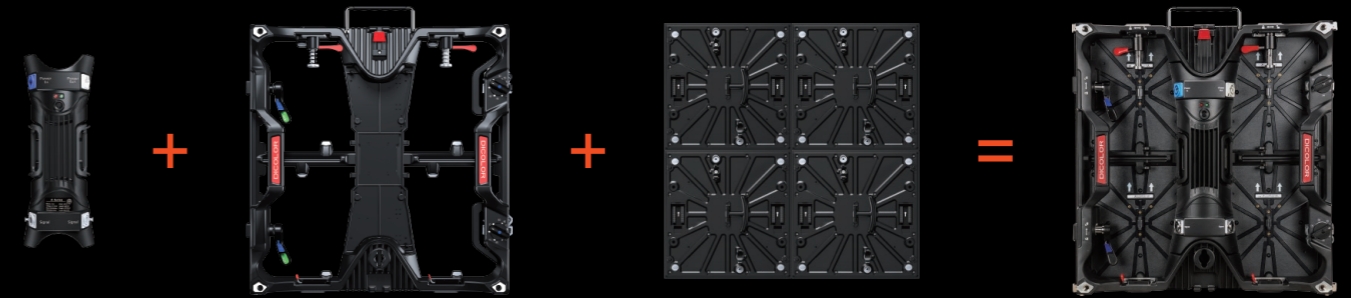


Product specifications

Product	AF-151	AF-231	AF-261	AF-291	AF-391
Pixel Pitch (mm)	1.5625	2.38	2.604	2.97	3.906
Cabinet size (WxHxD/mm)	500 × 500 × 80	500 × 500 × 80	500 × 500 × 80	500 × 500 × 80	500 × 500 × 80
Cabinet Resolution	320 × 320	210 × 210	192 × 192	168 × 168	128 × 128
Cabinet Weight (Kg)	7.8	7.8/8.5	7.8/8.5	7.8/8.5	7.8/8.5
Brightness (Nits)	800(Mini 4 合 1)	1000(SMD1515)	800(SMD1515)	800(SMD1515)	800(SMD2020)
Refresh Rate (Hz)	≥2880	≥2880	≥2880	≥3840	≥3840
Gray Scale (Bit)	14	14	14	14	14
IP Rating (Front/Rear)	IP40/IP21	IP40/IP21	IP40/IP21	IP40/IP21	IP40/IP21
Max./Avg Power Consumption(W/m ²)	508/149	640/214	520/173	528/176	536/178
Curve	/	± 5°	± 5°	± 10°	± 15°

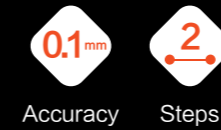
Modular design

Implement the universal switch of module, power box And module.



Originate creating

Humanized arc lock design (optional).



Adjust the angle

Fasten the lock

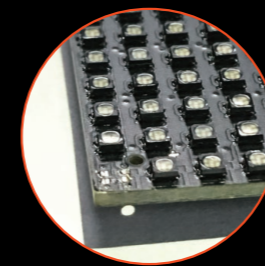
Full front and back maintenance

Quick maintenance of different occasions.



Reduce the need of maintenance

Double protection against bump and welding.



94°

Ground

Intelligent corner protector

360° preventing modules from damage.



To be No.1 in LED display industry



AF SERIES

Module Sharing Creating Value

Module Sharing Creating Value



Modular



High Gray Scale
High Refresh Rate



Front/Rear
Maintenance



Curve Design



Single Person
Installation



Anti-Damage



Shenzhen Dicolor Optoelectronics Co.,Ltd.

Address: No.13 Huiye Road, Tangjia Community, Fenghuang Street,
Guangming District, Shenzhen, China
Tel: +86-755-32901555 Fax: +86-755-29604042
E-mail: inquiry@dicolor.cn Website: www.dicolor.cn



400-6645-658

Shenzhen Dicolor Optoelectronics Co.,Ltd.